

*Five cities. Four countries. Three continents. One conference*

# EAPURS 2025

THE 2ND EUROPE ASIA-PACIFIC  
UNDERGRADUATE RESEARCH  
SYMPOSIUM



18 - 19 SEPTEMBER 2025

## Organising Institutions

JOHANNES GUTENBERG  
UNIVERSITÄT MAINZ



KYUSHU  
UNIVERSITY



UNIVERSITY OF  
CANBERRA



Institut Agama Islam Negeri  
Langsa



University of  
South Australia

# Welcome

Thanks to the diverse group of students who have committed to presenting at this year's conference we are proud to deliver two days of panel presentations.

We will be joined by students across the globe, from the University of Canberra, Kyushu University, Johannes Gutenberg University of Mainz, IAIN Langsa, and the University of South Australia. Though the research projects discussed and shared over the next two days may be at different stages, they all successfully highlight each student's dedication to groundbreaking research and provide an encouraging look into the future of interdisciplinary and international research possibilities.

This conference would not be possible without the efforts of each and every one of these students, especially the student leaders who stepped up to assist in the preparation of the conference proceedings and support their peers. Additionally, thanks is owed to the academics, staff, and volunteers behind the scenes whose vital feedback and guidance have inspired the latest cohort of undergraduate researchers.

With thanks, the Student Leaders and organising committee for EAPURS 2025.

# How to Attend:

EAPURS is an online event

You can join via Microsoft Teams with the following links:

## EAPURS Day 1:

[Join the meeting now](#)

Meeting ID: 464 357 994 948 6

Passcode: Ee3PZ6Af

## EAPURS Day 2:

[Join the meeting now](#)

Meeting ID: 419 442 247 123 1

Passcode: gA2XY6yt

# Conference Schedule

*Day 1 - Thursday 18 September*

6:45 am CEST Mainz	11:45am WIB Aceh	1:45pm JST Fukuoka	2:15pm ACST Adelaide	2:45pm AEST Canberra
Conference opening from student leaders				

## Session 1: Health and Well-being

7:00 am CEST Mainz	12:00pm WIB Aceh	2:00pm JST Fukuoka	2:30pm ACST Adelaide	3:00pm AEST Canberra
Chair	Hüseyin Uysal - Johannes Gutenberg-University Mainz			
Title	The hidden struggle: Mapping loneliness in Canberra's first-time parents	The N400 surprisal effect as an index of model updating in Persistent Pain	The Effect of Daylight Savings Time on Sleep EEG in Adults	Video gaming's new slippery slope: Gacha mechanics normalising gambling
Presenter	Riley FERNANDES	Claire HUNT	Juhi AIDEN	David DINH
Institution	University of Canberra	University of South Australia	University of South Australia	University of Canberra

## Session 2: Our built and natural environments

8:00 am CEST Mainz	1:00pm WIB Aceh	3:00pm JST Fukuoka	3:30pm ACST Adelaide	4:00pm AEST Canberra
<b>Chair</b>	Miguel Murray - Kyushu University			
<b>Title</b>	The salty saviour: Could something as simple as salted ponds save our frogs?	Bioremediation of Foodwaste	Net-Zero House Starter Kit	Sensory Adaptive Housing: Designing the way to neuroinclusive housing through the use of heuristics, case study, and sensory mapping
<b>Presenter</b>	Angela KIRKEGAARD	Serasaroshiya CHIEMPITAYANUVAT	Abinael LUMEMPOUW	Malysa TOMKINSON
<b>Institution</b>	University of Canberra	Kyushu University	Kyushu University	University of South Australia

## Session 3: Promise and Policy

9:00 am CEST Mainz	2:00pm WIB Aceh	4:00pm JST Fukuoka	4:30pm ACST Adelaide	5:00pm AEST Canberra	
Chair	Sebastian Auer - Johannes Gutenberg-University Mainz				
Title	Should a ‘universal basic income’ (UBI) be introduced?	Powering Prosperity: Economic signals of rising electricity costs across local and global markets	Bridging the Divide: Technological innovation as a catalyst for rural financial equality in a global financial landscape	Comparative study of the Global Governance and ESG Stewardship Aspects of TSMC’s Arizona Fab in the USA and Kumamoto Fab in Japan	Generative artificial intelligence at work: Boosting satisfaction and engagement or fueling burnout?
Presenter	Claire OEHRL-TOBLER	Isaiah LILIKAKIS	Katherine MITTERER	Benjamin Joshua LOWY	Yu Xuan LAI
Institution	Johannes Gutenberg-University Mainz	University of South Australia	University of South Australia	Kyushu University	University of South Australia

## Session 4: Education and inclusion

10:00 am CEST Mainz	3:00pm WIB Aceh	5:00pm JST Fukuoka	5:30pm ACST Adelaide	6:00pm AEST Canberra
<b>Chair</b>	Julia Goschke - Johannes Gutenberg-University Mainz			
<b>Title</b>	Analysis of primary age gifted and talented educational pathways across rural, regional and remote New South Wales	The Quiet Crisis: Examining Academic Burnout in High-Performing Students During College Transition	Collaborative Learning and Teaching: A Narrative Inquiry Study of EFL Student Teacher Volunteers' Strategies and Challenges in Rural Villages	Supporting neurodiverse learners: trauma, education, and regional inclusion
<b>Presenter</b>	Keegan JAMES	Muhammad HUSAIRI	Aulia Sinthia MAYANG	Ally MARSHALL
<b>Institution</b>	University of Canberra	Institut Agama Islam Negeri Langsa	Institut Agama Islam Negeri Langsa	University of Canberra

## Session 5: The power of the image

11:00 am CEST Mainz	4:00pm WIB Aceh	6:00pm JST Fukuoka	6:30pm ACST Adelaide	7:00pm AEST Canberra
<b>Chair</b>	Belinda Lawrence - University of South Australia			
<b>Title</b>	Seriality and Intros on YouTube	Putting Down Roots: How can ethnographic filmmaking explore the nuances of Sri Lankan transnational identity construction in regional Australia and reveal links to an 'uprooted' past?	Confirmation bias in the perception of disaster risk based on real-world images	Art as a tool in raising public awareness of roadkill to promote advocacy
<b>Presenter</b>	Paul KUISLE	Daniru JAYASURIYA	LIU Hanxiao	Samantha THOMAS
<b>Institution</b>	Johannes Gutenberg-University Mainz	University of South Australia	Kyushu University	University of Canberra

Session 6: Disasters - prevention, reflection, and data collection

12:00 pm CEST Mainz	5:00pm WIB Aceh	7:00pm JST Fukuoka	7:30pm ACST Adelaide	8:00pm AEST Canberra
Chair	Naomi Campbell - University of South Australia			
Title	Implementing the Basel Convention in Tuvalu: A Legal Framework for Hazardous Waste Control in the Pacific	Aid without Trust: Civil Society and Donor Dynamics after the 2025 Myanmar Earthquake	Standardizing Disaster Health Reporting: A Framework for Data Collection and Research Utilization	
Presenter	Hannah HOWARTH	Pablo SALVARY-GASSILOUD and Than Htike Zaw	Miguel MURRAY	
Institution	University of Canberra	Kyushu University	Kyushu University	

..... **End of Day 1** .....

# Conference Schedule

*Day 2 - Friday 19 September*

7:45 am CEST Mainz	12:45pm WIB Aceh	2:45pm JST Fukuoka	3:15pm ACST Adelaide	3:45pm AEST Canberra
Conference opening from student leaders				

## Session 7: ‘Language’ and Linguistics

8:00 am CEST Mainz	1:00pm WIB Aceh	3:00pm JST Fukuoka	3:30pm ACST Adelaide	4:00pm AEST Canberra
<b>Chair</b>	Kimberly Schlüter - Johannesburg Gutenberg-University Mainz			
<b>Title</b>	Lost in Translation? Investigating the impact of digital lecturer language adaptation on non-native English-speaking students’ learning performance and experience	A speech act analysis of insults and threats directed at local politicians	Agentivity and Word Order in Auslan: An Eye-Tracking Investigation	The Application of Artificial Intelligence in Analysing the Contextual Emotions of Text
<b>Presenter</b>	Alma KALOSA	Isabell LIEFFERTZ	Bailey HART	Alwyn MILLER
<b>Institution</b>	University of South Australia	Johannes Gutenberg-University Mainz	University of South Australia	University of Canberra

## Session 8: Gender and gendering

9:00 am CEST Mainz	2:00pm WIB Aceh	4:00pm JST Fukuoka	4:30pm ACST Adelaide	5:00pm AEST Canberra
<b>Chair</b>	Evi Nadila - Institut Agama Islam Negeri Langsa			
<b>Title</b>	Gendered norms and grief: A trans* account of bereavement	Study of the effect of Women's Co-occurring ADHD and Depression in Academia	Black Feminism: (M)othering in Toni Morrison's <i>A Mercy</i>	Establishing deep-visual proteomics for the analysis of tumour tissue
<b>Presenter</b>	Caelan FARR	Kelsey ARMITAGE	Marlene WINKLER	Krishna Hardikkumar CHOKSHI
<b>Institution</b>	University of South Australia	University of Canberra	Johannes Gutenberg-University Mainz	University of South Australia

## Session 9: Approaches to Education

10:00 am CEST Mainz	3:00pm WIB Aceh	5:00pm JST Fukuoka	5:30pm ACST Adelaide	6:00pm AEST Canberra
<b>Chair</b>	Riley Fernandes - University of Canberra			
<b>Title</b>	Indicator-based analysis of participation in chemistry	Reading Between the Lines: Boosting EFL Comprehension Through Inferencing	Designing Contextualized Learning Materials with Canva Education's Impact for English Vocabulary Acquisition at SD Muhammadiyah 2 Kota Langsa	
<b>Presenter</b>	Patrick KLOSTER	Zaurin ADELIANI	Syukiet Safiah HANUM	
<b>Institution</b>	Johannes Gutenberg-University Mainz	Institut Agama Islam Negeri Langsa	Institut Agama Islam Negeri Langsa	



## Session 10: Education and Empowerment

11:00 am CEST Mainz	4:00pm WIB Aceh	6:00pm JST Fukuoka	6:30pm ACST Adelaide	7:00pm AEST Canberra
<b>Chair</b>	Syarifah Azuhra - Institut Agama Islam Negeri Langsa			
<b>Title</b>	Empathy in action: Exploring drama-based approaches to foster social-emotional learning in Australian and Vietnamese classrooms	Empowering Acehnese EFL Learners: A Qualitative Study on Pronunciation Pedagogy, Self-Efficacy, and Systemic Barriers in Indonesian ELT	Student Voices on Speaking Fear: A Qualitative Inquiry into Why 'Knowing is not Enough to Speak'	Invisible, not imaginary: A peek behind the curtain
<b>Presenter</b>	Gia Khanh TRAN	Syarifah Putri ALBUFTHAHM	Novaliza U	Anne FRAZER
<b>Institution</b>	University of South Australia	Institut Agama Islam Negeri Langsa	Institut Agama Islam Negeri Langsa	University of South Australia

## Session 11: Global and historical perspectives

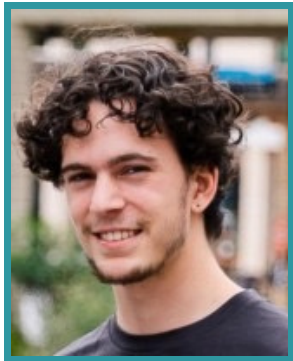
12:00 pm CEST Mainz	5:00pm WIB Aceh	7:00pm JST Fukuoka	7:30pm ACST Adelaide	8:00pm AEST Canberra
<b>Chair</b>	Jasper Shields - University of Canberra			
<b>Title</b>	Understanding Global English Accents: Listening Challenges and Strategies Among EFL Learners	Education as an enabler from local struggler to globally informed advocate	"Anonymity and Authenticity: Exploring Informal English Learning Through Chatroulette"	
<b>Presenter</b>	Saskia Ananda NASYWA	Toby GAJEWSKI	Muhammad FALKA Alwi	
<b>Institution</b>	Institut Agama Islam Negeri Langsa	University of South Australia	Institut Agama Islam Negeri Langsa	

1:00 pm CEST Mainz	6:00pm WIB Aceh	8:00pm JST Fukuoka	8:30pm ACST Adelaide	9:00pm AEST Canberra
Conference closing from student leaders				

..... **End of Day 2** .....

Situated in the nation's capital, the University of Canberra (UC) is a young and ambitious university known for its strong industry connections and focus on practical learning. UC's mission is to serve the capital region through education and research. The university is highly regarded for applied research in areas such as Water Science, Conservation Ecology and Genomics, News and Media Research, and Ageing Research. With a diverse and welcoming student community, UC prepares graduates to make a meaningful impact locally and globally.

## Student Leaders:



**Jasper  
SHIELDS**

Jasper is a final-year Psychological Science student at the University of Canberra with a strong focus on behavioural science, clinical psychology, public policy, and governance. He serves on the UC Academic Board and Student Conduct Committee, and was previously a student of the Japan-Australia Research Leadership and Innovation (JARLAI) program in 2024, where his group contributed to cross-cultural research on women's healthcare systems. He currently supports COMPAS, a suicide prevention initiative at UC.



**Riley  
FERNANDES**

Riley is undertaking a double degree in Psychology and Health Science at the University of Canberra. Her background as a political candidate, carer, and single parent, informs her approach to research with a focus on addressing research gaps that can better inform public policy. At EAPURS she will be presenting her project on the experiences of loneliness in early parenthood, which aims to investigate whether individual factors including parenting self-efficacy could play a role in protecting new parents from loneliness.



As one of Japan's prestigious seven Imperial Universities, Kyushu University boasts the nation's largest campus, a symbol of its rich history and its dynamic forward momentum. It is an institution where a deep respect for tradition is matched by a powerful drive for innovation, pioneering groundbreaking research in various fields of study from hydrogen energy and social issues to earth dynamics and sustainable development.

Central to its global vision is the School of Interdisciplinary Science and Innovation (ISI). This program is dedicated to cultivating the next generation of problem-solvers, empowering them to identify pressing global challenges and address them through a unique, integrated lens. ISI students learn to weave together perspectives from the sciences, mathematics, social sciences, and humanities, recognizing that the most complex issues exist at the intersections of these disciplines.

## Student Leader:



**Miguel  
MURRAY**

Miguel Murray is an undergraduate student in the School of Interdisciplinary Science and Technology at Kyushu University with a focus in medical aid, data, and management. His studies pertaining to technology, disaster response, and engineering, along with his past experiences and training in wilderness aid, leadership and education, allow him to have various viewpoints between topics.



**Kyushu University**

Johannes Gutenberg-University Mainz (JGU) is one of Germany's largest and most diverse universities, JGU fosters innovation, critical thinking, and collaboration across borders. Named after the inventor of the printing press, the university upholds his legacy by advancing knowledge and inspiring progress through education and research.

Studyprogram Q+ is a new interdisciplinary supplementary program at JGU Mainz, which more than 550 particularly committed and inquisitive undergraduate and graduate students as well as 400 lecturers from all faculties have already taken part in. It is supported by around 50 external partner organizations. Q+ addresses crucial current issues in our society, which are examined from a critical, interdisciplinary academic perspective, but also from a concrete, practical perspective in specially designed workshops, seminars and excursions.

## Student Leaders:



**Hüseyin  
UYSAL**

Julia has recently completed a Bachelor's degree in Molecular Biology at the JGU. She has since spent a semester pursuing a Master's program in Bioinformatics, also at JGU. However, this will be her last semester there, as she is moving to Vienna to begin a second Bachelor's degree in Journalism and Science Communication.



**Julia  
GOSHKE**



**Kimberly  
SCHLÜTER**

Kimberly Schlüter is a research associate and PhD candidate in Media Sociology and Theory of Society at JGU. She studied Sociology and Political Science in Mainz, Östersund, and Vienna, and holds M.A. degrees in Sociology and Gender Studies – Intersectionality and Change. Her research and teaching focus on qualitative methods and studies of human differentiation.

Sebastian is pursuing a Master's degree in International Economics and Public Policy at JGU. His academic interests lie with behavioral economics, machine learning, and public policy with a strong focus on economic justice and democratic governance. Having studied abroad in multiple countries, Sebastian brings a global perspective to his work and values cross-cultural collaboration. Outside of his studies, he's involved in organizing seminars and research projects on inequality, poverty and EU politics.



**Sebastian  
AUER**

The University of South Australia (UniSA) is a globally connected and industry-engaged university, recognised for its practical approach to teaching and research. With campuses across Adelaide and regional South Australia, UniSA is home to cutting-edge facilities, world-class researchers, and programs designed to prepare graduates for global careers. Through close partnerships with industry, government, and communities, the university ensures its work directly contributes to solving today's challenges and shaping a better future.

## Student Leaders:



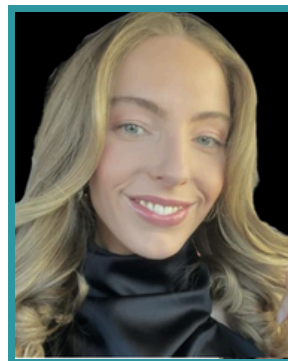
**Belinda  
LAWRENCE**

Belinda is in her final year studying a Bachelors of Psychological Science & Sociology at the University of South Australia. Belinda currently works for the Climate Change Adaptation Lab at La Trobe University and is looking forward to pursuing a career in policy development. Belinda lives in Wurundjeri/Melbourne with her dog Archie.

Simon is currently studying Construction Management with the University of South Australia. He has several years of experience working in higher education, as well as significant industry experience in building and construction. He works full-time as the General Manager of a construction company located in Victoria. He is a proud father and husband, and is excited to be a part of EAPURS 2026.



**Simon  
LANDS**



**Naomi  
CAMPBELL-  
SMITH**

Naomi is a Public Health student at the University of South Australia (Online) with a strong interest in digital health and developing innovative responses to complex, intersectional systems. As a 2023 New Colombo Plan Fellow, she undertook placements in Vietnam exploring mental health and sustainable mobility. Her work focuses on improving access and equity through technology-enabled solutions, and through Lived Experience workforce development in Western Australia.





**Institut Agama Islam Negeri  
Langsa**

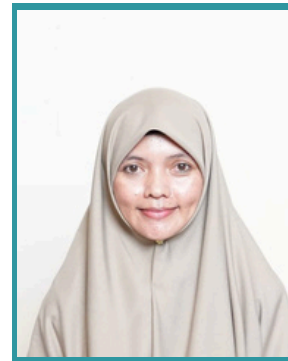
Institut Agama Islam Negeri (IAIN) Langsa is a dynamic public Islamic university located in Langsa, Aceh, Indonesia. The university is known for its inclusive ethos, community engagement, and emphasis on character formation. It actively promotes research, innovation, and international collaboration. With modern facilities, digital infrastructure, and a growing reputation for academic excellence, IAIN Langsa continues to play a vital role in shaping future leaders and scholars who are grounded in Islamic ethics and responsive to global challenges. As it expands its reach and impact, IAIN Langsa remains committed to fostering a values-driven, transformative educational environment for the region and beyond.

## Student Leaders:



**Evi  
NADILA**

Evi is a passionate language and art enthusiast. Her journey includes joining the English Club on campus, participating in various committees and organizational activities, and engaging in community service projects. She has also participated in and received recognition for public speaking contests. Beyond academics, she enjoys creating webtoon comics, drawing and sharing knowledge through private English tutoring.



**Shafrida  
WATI**

Shafrida is a lecturer at the Faculty of Tarbiyah and Teacher Training, IAIN Langsa, Aceh, Indonesia, with a Master's degree in Education from the University of Leeds. Grounded in her academic expertise in education, she is deeply engaged in English Language Teaching (ELT), focusing on equipping prospective teachers with EFL teaching competencies and supporting their ongoing professional growth.

Syarifah from IAIN Langsa is passionate about exploring how language empowers individuals and connects communities. Outside academics, she enjoys travelling and reading novels, as both activities inspire creativity and broaden her worldview. Driven by resilience and optimism, she aims to become an English educator who benefits society.



**Syarifah  
AZUHRA**